

2024 Discipleship House Information Sheet

We are planting a discipleship community of young adults who are active in parish life and champion the spiritual growth of children and youth in the parish through relationship, discipleship and evangelism.

About Peninsula Parish

Peninsula Parish (Anglican Parish of Miramar, Seatoun and Strathmore) is part of the Anglican Diocese of Wellington.

Our congregation is beautifully intergenerational, with parishioners ranging in age from 0-90's. While we have experienced growth both in the number of families and retirees, there are comparably few young adults (20-30 year olds). We have observed that as our youth age up the church has historically struggled to retain them. We deeply believe that young adults are a vital part of the church family and an important link in the chain of intergenerational discipleship. We also believe we are well resourced to be a blessing in the lives of young adults, and to provide a sense of family, mentoring and support in their walk with Jesus.

We are establishing a discipleship community of young adults whose lives we will invest in and who will invest in discipleship relationships with youth in the parish.

Commitments & Rhythms

This document outlines our mutual commitment to discipleship as we seek to follow Jesus. We want to clearly communicate in advance the expectations for living in this community so that we can hold one another accountable to our core commitments. We want to have a conversation with you about these expectations to ensure there is clarity around what you're agreeing to.

As a member of this Discipleship Community, you will be supported to:

1. Grow in your identity as a child of God
2. Gain a deeper understanding of the foundations of the christian faith
3. Cultivate relationships with those in the generation younger than you to intentionally pass on (echo down) the faith
4. Identify and minister using your gifts in the local church, knowing you are a vital part of the body.

Living as neighbours to the vicarage, residents of the discipleship house enjoy a special relationship with the vicarage family.

We commit to participating in regular rhythms of life together. These rhythms are in addition to any individual faith disciplines or practices. The rhythms outlined below take priority over other one-off/regular commitments and will look like a version of the following:

Sunday	Worship w/ Peninsula Parish	10:00am
	Evening prayer	evening
Monday*	compline	9pm
Wednesday*	Dinner w/ vicarage family	6pm
	Team meeting	6:45pm
	Discipleship night Bible study & compline	7:30pm-9pm Open to individuals not in the house but desiring to grow in discipleship to join.

Margin for hospitality & ministry

Plan margin into your weekly rhythm to allow space for hospitality and participation in ministry using the gifts the Spirit has given you. Examples of what this could look like:

- Meals or cuppa's with parish families/youth.
- Intentionally pursuing discipleship relationships with youth/children meeting in triads (group of 3).
- Participating in Sunday worship through music and inviting other young adults/youth with musical gifts to serve alongside you
- Joining existing Sunday school rotations (1x/month) with an eye to inviting & training youth to serve/lead alongside you

**days may vary.*

In addition to the above weekly commitment, residents should plan on attending Ministry Leaders' Family Camp (usually scheduled for a weekend in March).

To say yes to these rhythms may require a willingness to adjust commitments in other parts of your life. Rhythms of life together will run from February to mid December. Residency in the house is offered on a 12 month fixed term agreement.

Practical Considerations

Hospitality

Hospitality is at the heart of the gospel and is a core part of our life with God. As such, those living in the discipleship house will regularly extend and receive table hospitality.

Smoking/Drugs

The discipleship house is smoke, vape and drug free.

Alcohol

Residents are permitted to responsibly consume alcohol in moderation. Alcohol should be discreetly stored out of sight. There may be times residents choose not to consume alcohol

to ensure it is a welcoming or safe place for those in and around our community. Drinking with youth/children is prohibited.

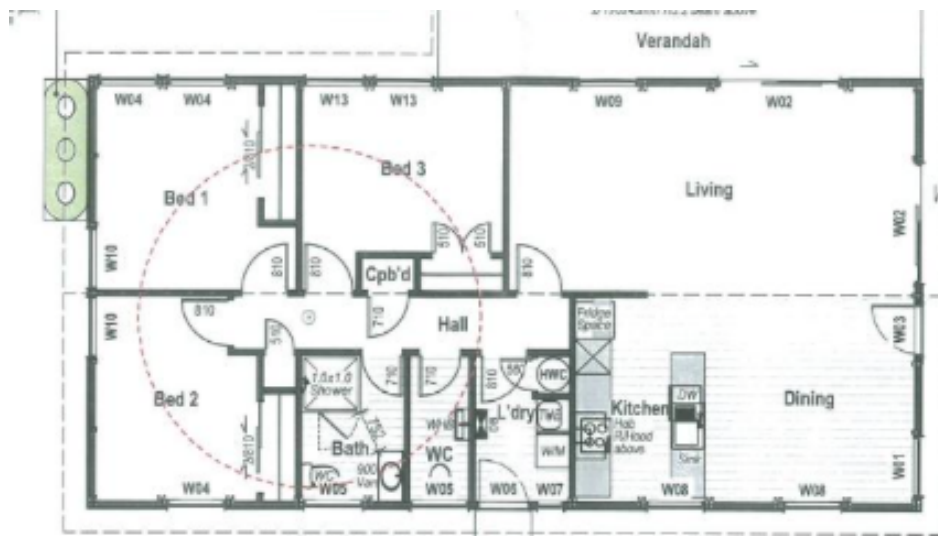
Sex & Relationships

Residents in the house will honour relationships through the practice of chastity and will not engage in sex outside of the covenant of marriage. If partners stay overnight, they will be asked to stay in the lounge if permission has been granted by the other residents.

We welcome conversations about what these commitments mean for you. Please seek these conversations in advance of applying for residency in the discipleship house.

The House

Residents of the discipleship community will enjoy living in a new house, behind the church, next to the vicarage and overlooking the local polo grounds. The house is currently being built and we anticipate it will be completed and available for occupancy by early February 2024. The house is modern with an open-planned kitchen, dining and living, 3 equally sized bedrooms, a bathroom with separate toilet, and laundry room. [This video tour](#) will give you a feel for the house we are building (with modifications to equalise bedroom sizes, remove ensuite and add separate toilet).



Tenancy

Tenancy will be offered on a 12 month fixed term basis.

Rent

The discipleship house has 3 comfortably sized bedrooms. We are seeking 3 residents for the house (4 residents at most, if there is a married couple). Rent will be equally split among the residents. We anticipate rent being \$750/week, which works out as \$250/week *per resident* not including expenses (power, food etc).

Furnishings

The common spaces in the house (kitchen, dining & living) will be furnished by the Parish. Bedrooms are unfurnished. You will need to provide your own furniture for your bedroom.

Parking

There are no car parks assigned for the house, however there is ample street parking, and the bus stop is just a block away.

Police Checks

In accordance with Parish and Diocese health and safety procedures, residents will be required to undergo police vetting checks (undertaken for anyone aged 18 or older who are involved in ministry to children).

Discipleship Community Questionnaire

The information collected in this form is intended to help us get to know you. No answer will necessarily preclude an applicant from becoming a resident. This is so we can learn more about you. Joining a residential Christian community differs from flatting. Please ensure you have read the Discipleship House Information Sheet (attached) and seek conversations with us for additional clarity about what the commitment will require of you. If it is mutually discerned that the next step is joining this discipleship community, a separate application for residency in the house will be provided.

YOUR DETAILS

Name:

Email:

Phone:

Date of Birth:

Current Address:

CHURCH CONNECTION

With what church are you currently associated?

Do you attend: WEEKLY / EVERY OTHER WEEK / MONTHLY / OCCASIONALLY

Do you affirm the faith as handed down in the Nicene Creed? *(attached)* YES / NO

What church activities or ministries have you enjoyed being a part of?

GENERAL

Please give three words that describe yourself and why:

1.

2.

3.

What are two things you value in life?

Have you been flatting before? If yes, please give details.

Have you lived in a Christian community before? If yes, please give details.

WORK/STUDY DETAILS (If you don't know, write: Don't Know)

If working, what is your job?

How many hours a week do you intend to work/week in 2024?

If you are studying, what year are you? Where and what are you studying?

How many hours a week do you intend to study/work? (total including hours of part-time work)

SHORT ANSWER

1. Why are you interested in living in the discipleship community at Peninsula Parish?
2. What do you think living in a discipleship community will be like?
3. Consider your faith journey. What role has meaningful relationships with spiritual mentors played in your faith formation to date?
4. Have you played an active role in the faith formation of others? *If yes, elaborate.*
Are you willing to grow in this area?
5. Are you willing to become part of our Parish for the duration of your time living in the discipleship house? *This includes participation in weekly Sunday worship.*

CHARACTER REFERENCE

Please provide the name and contact details of a character referee that we may contact. This can be any responsible person who knows you well enough to speak for you, ideally one who knows you in the context of your walk with Christ.

Name:

Nature of relationship:

Phone:

Email:

Nicene Creed

We believe in one God,
the Father, the almighty,
maker of heaven and earth,
of all that is, seen and unseen.

We believe in one Lord, Jesus Christ,
the only Son of God,
eternally begotten of the Father,
God from God, Light from Light,
true God from true God,
begotten, not made,
of one being with the Father.
Through him all things were made.
For us and for our salvation
he came down from heaven;
was incarnate of the Holy Spirit and the Virgin Mary,
and was made man.
For our sake he was crucified under Pontius Pilate;
he suffered death and was buried.
On the third day he rose again
in accordance with the scriptures;
he ascended into heaven
and is seated at the right hand of the Father.
He will come again in glory
to judge the living and the dead,
and his kingdom will have no end.

We believe in the Holy Spirit,
the Lord, the giver of life,
who proceeds from the Father and the Son.
With the Father and the Son he is worshipped and glorified.
He has spoken through the Prophets.

We believe in one holy catholic and apostolic Church.
We acknowledge one baptism for the forgiveness of sins.
We look for the resurrection of the dead, and the life of the world to come. Amen.